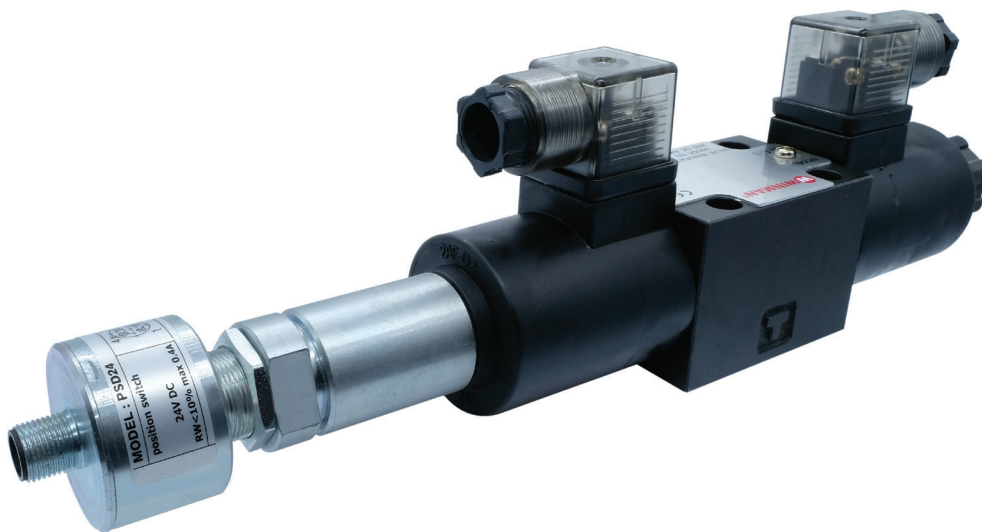


**SOLENOID DIRECTIONAL SAFETY VALVE**



**Model description**

**S - DF - A - 02 - 3C2 - D24 - L - 35 - A - PSD24 - 00**

S: Shockless type  
No code: Standard type

DF : Wet type solenoid operated directional valves (refer to solenoid valve catalog)

Electrical conduit connection:  
A: Hirschmann /DIN type  
B: Joint box type

Nominal size:  
02: 1/4 (NG 6)  
03: 3/8 (NG 10)  
04: 1/2 (NG 16)  
06: 3/4 (NG 25)  
10: 1-1/4 (NG 32)

Spool type (see spool symbol chart)

Manufacturing year  
12: 2012  
13: 2013

PS : Inductive position switch  
D24: 24 VDC voltage

A. Single coil valve with single PS  
B: Double coil valve with single PS  
C: Double coil valve with double PS

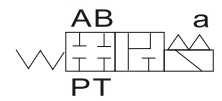
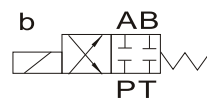
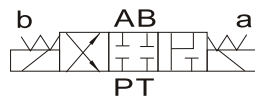
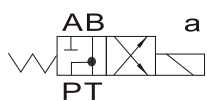
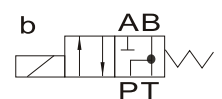
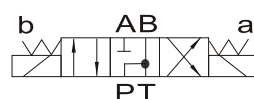
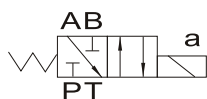
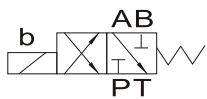
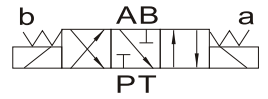
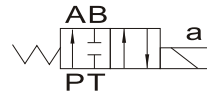
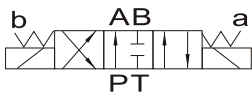
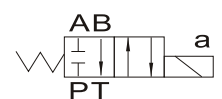
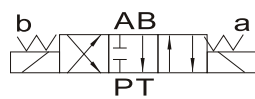
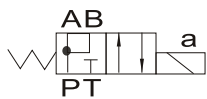
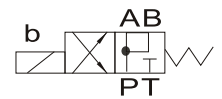
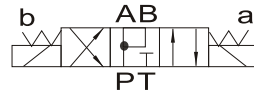
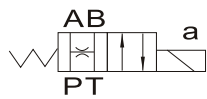
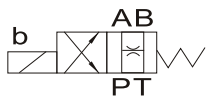
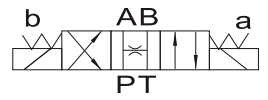
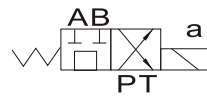
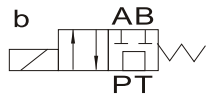
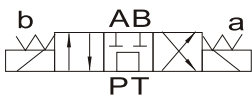
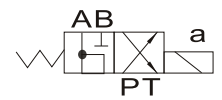
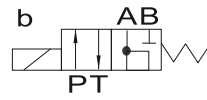
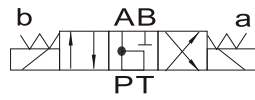
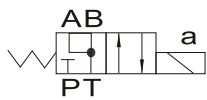
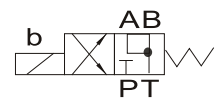
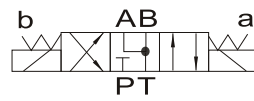
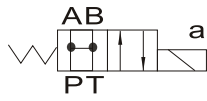
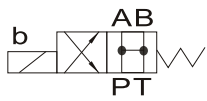
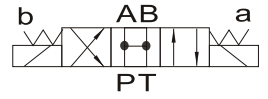
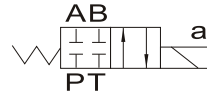
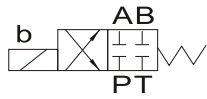
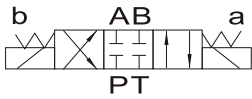
Designing number for high pressure & high flow type.  
35: Permissible back pressure 210 bar

L: With indicating light  
No code: Without indicating light

Coil voltage :  
AC: A110 (50/60Hz)  
A220 (50/60Hz)  
DC: D12,D24 (other DC voltage as requested)  
RAC: R110 (50/60Hz)  
R220 (60/60 Hz)  
(W/Built-in rectifier, change AC into DC)

**SOLENOID DIRECTIONAL SAFETY VALVE**

Ordering Code



**SOLENOID DIRECTIONAL SAFETY VALVE**

**Inductive position switch PS, electrical connection**

The electrical connection is made by means of a 4-pin cable socket with threaded connection M12 x 1.

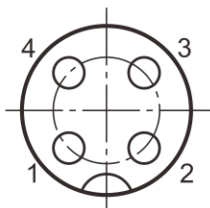
**Operating voltage** 24 VDC voltage + 20%  
- 10%  
(Residual ripple content < 10%)

**Current consumption:** Maximum 40 mA

**Load-carrying capacity of outputs:** 400 mA (output to PNP 24 V=)

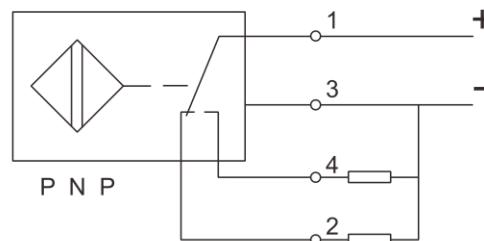
**Temperature range:** -20°C to +80°C

**Pin assignment:**



Plug-in contacts on position switch

- 1: +24 V
- 2: Switch output X1:  
The switch output X1 is opened during damping (high resistance condition) and closed when the damping is deactivated (low resistance condition)
- 3: 0 V
- 4: Switch output X2:  
The switch output X2 is closed during damping (low resistance condition) and opened when the damping is deactivated (high resistance condition)

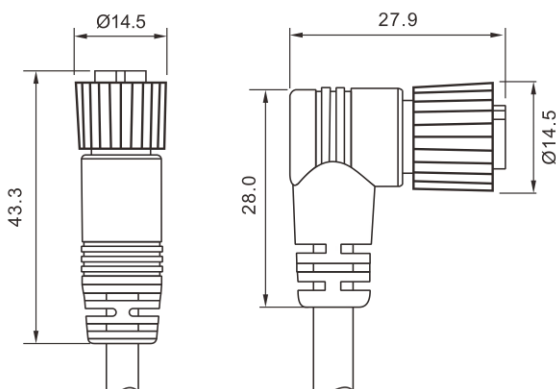


Inductive position switch type PS can be a normally-closed or normally-open contact.

**⚠ Caution!**  
The position switch is not provided with a protective conductor connection!

**Cable socket for inductive position switch type PS**

(nominal dimensions in mm)

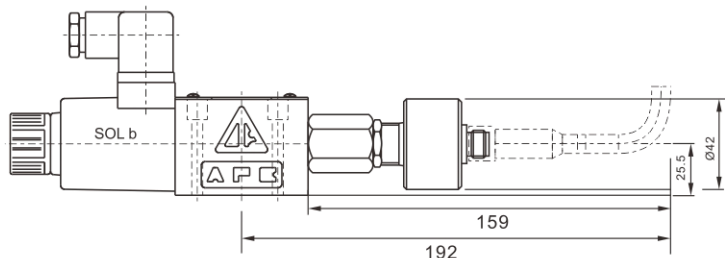


Cable socket 2m, 4-pin, M12 x 1 with moulded-on PVC cable, 2m long.

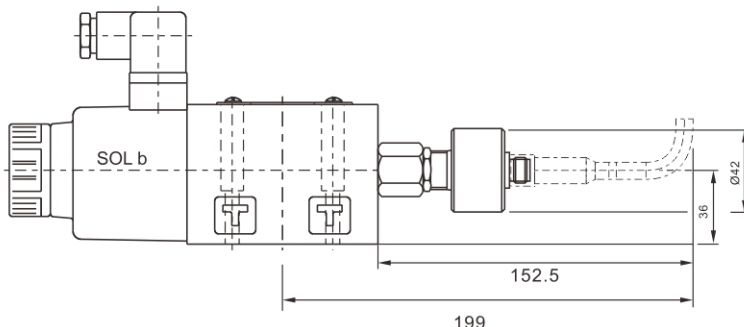
Cable cross-section: 4 x 0.34mm<sup>2</sup>

Wire identification: 1: brown  
2: white  
3: blue  
4: black

Housing can be rotated through 4 x 90° in relation to the contact insert.



DFA-02-2B2-D24-35-A-PSD24



DFA-03-2B2-D24-35-A-PSD24

## SOLENOID DIRECTIONAL SAFETY VALVE

### Inductive position switch PS, electrical connection

The electrical connection is made by means of a 4-pin cable socket with threaded connection M12 x 1.

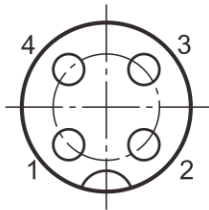
**Operating voltage** 24 VDC voltage + 20%  
- 10%  
(Residual ripple content < 10%)

**Current consumption:** Maximum 40 mA

**Load-carrying capacity of outputs:** 400 mA (output to PNP 24 V=)

**Temperature range:** -20°C to +80°C

**Pin assignment:** Pluse switching, load between the output and 0 V



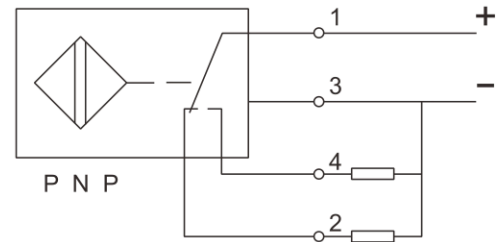
Plug-in contacts on position switch

1: +24 V

2: N/O 1

3: 0 V

4: N/O 2

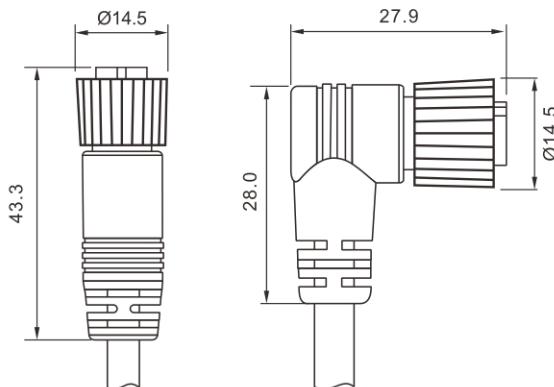


Inductive position switch type PS can be a normally-closed or normally-open contact.

**⚠ Caution!**  
The position switch is not provided with a protective conductor connection!

### Cable socket for inductive position switch type PS

(nominal dimensions in mm)

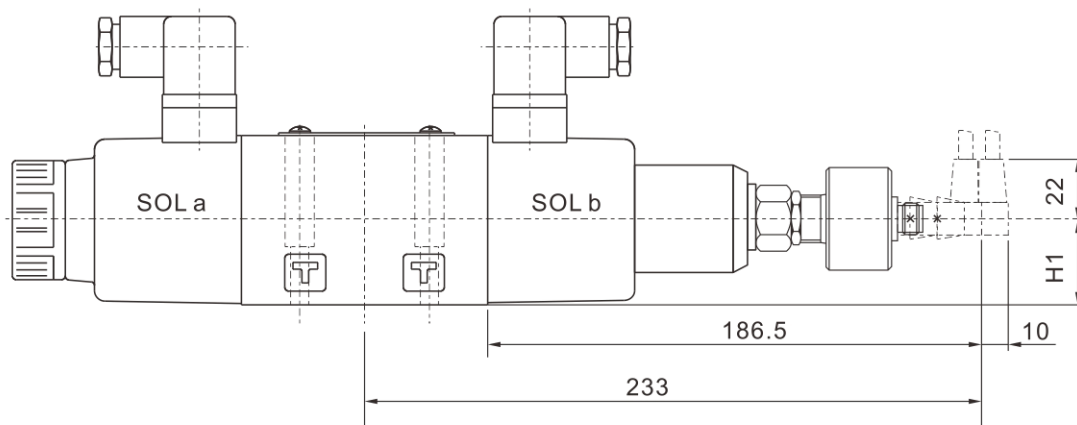


Cable socket 2m, 4-pin, M12 x 1 with moulded-on PVC cable, 2m long.

Cable cross-section: 4 x 0.34mm<sup>2</sup>

Wire identification: 1: brown  
2: white  
3: blue  
4: black

Housing can be rotated through 4 x 90° in relation to the contact insert.



DFA-02/03-3C2-D24-35-B-PSD24

**SOLENOID DIRECTIONAL SAFETY VALVE**

**Inductive position switch PS, electrical connection**

The electrical connection is made by means of a 4-pin cable socket with threaded connection M12 x 1.

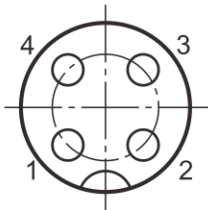
**Operating voltage** 24 VDC voltage + 20%  
- 10%  
(Residual ripple content < 10%)

**Current consumption:** Maximum 40 mA

**Load-carrying capacity of outputs:** 400 mA (output to PNP 24 V=)

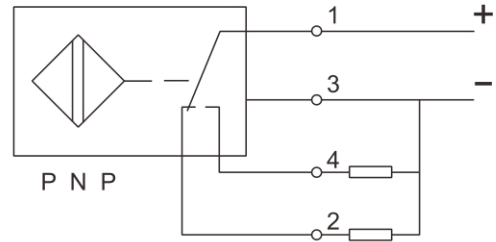
**Temperature range:** -20°C to +80°C

**Pin assignment:**



Plug-in contacts on position switch

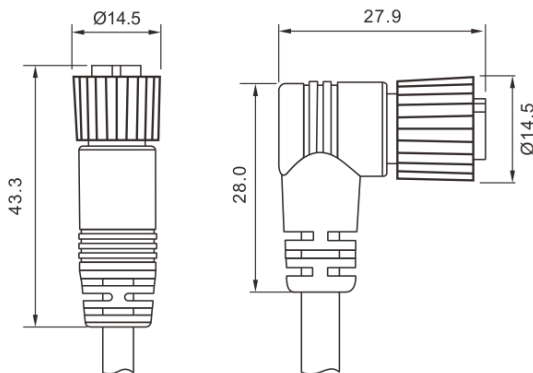
- 1: +24 V
- 2: Switch output X1:  
The switch output X1 is opened during damping (high resistance condition) and closed when the damping is deactivated (low resistance condition)
- 3: 0 V
- 4: Switch output X2:  
The switch output X2 is closed during damping (low resistance condition) and opened when the damping is deactivated (high resistance condition)



Inductive position switch type PS can be a normally-closed or normally-open contact.

**⚠ Caution!**  
The position switch is not provided with a protective conductor connection!

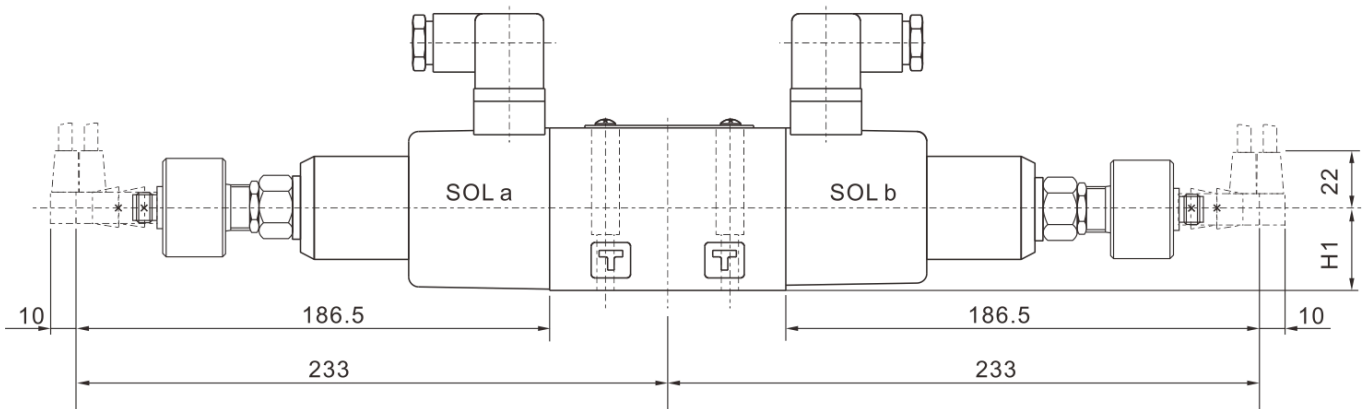
**Cable socket for inductive position switch type PS**



Cable socket 2m, 4-pin, M12 x 1 with moulded-on PVC cable, 2m long.

Cable cross-section: 4 x 0.34mm<sup>2</sup>  
Wire identification: 1: brown  
2: white  
3: blue  
4: black

Housing can be rotated through 4 x 90° in relation to the contact insert.



DFA-02/03-3C2-D24-35-C-PSD24

**SOLENOID DIRECTIONAL SAFETY VALVE**

**Inductive position switch PS, electrical connection**

The electrical connection is made by means of a 4-pin cable socket with threaded connection M12 x 1.

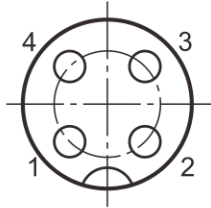
**Operating voltage** 24 VDC voltage + 20%  
- 10%  
(Residual ripple content < 10%)

**Current consumption:** Maximum 40 mA

**Load-carrying capacity of outputs:** 400 mA (output to PNP 24 V=)

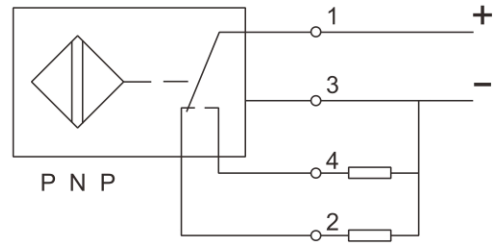
**Temperature range:** -20°C to +80°C

**Pin assignment:**



Plug-in contacts on position switch

- 1: +24 V
- 2: Switch output X1:  
The switch output X1 is opened during damping (high resistance condition) and closed when the damping is deactivated (low resistance condition)
- 3: 0 V
- 4: Switch output X2:  
The switch output X2 is closed during damping (low resistance condition) and opened when the damping is deactivated (high resistance condition)

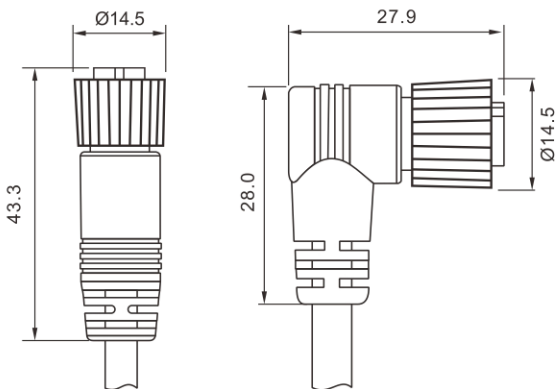


Inductive position switch type PS can be a normally-closed or normally-open contact.

**⚠ Caution!**  
The position switch is not provided with a protective conductor connection!

**Cable socket for inductive position switch type PS**

(nominal dimensions in mm)

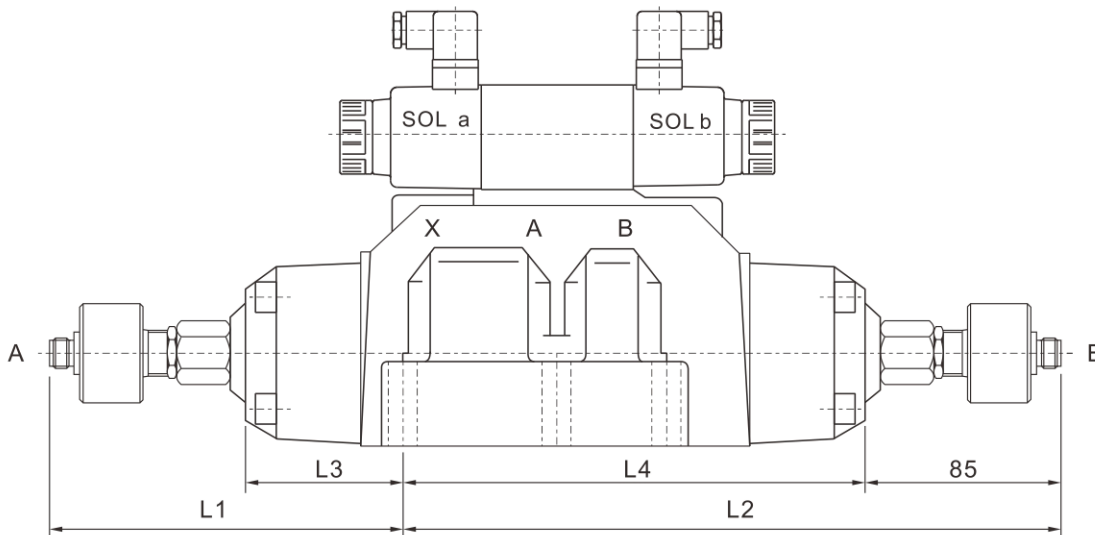


Cable socket 2m, 4-pin, M12 x 1 with moulded-on PVC cable, 2m long.

Cable cross-section: 4 x 0.34mm<sup>2</sup>

- Wire identification:
- 1: brown
  - 2: white
  - 3: blue
  - 4: black

Housing can be rotated through 4 x 90° in relation to the contact insert.



DFA-04/06/10-3C2-D24-35-C-PSD24